

*Good
Morning!*



SWAF
SOUTHWEST
ADAPTATION
FORUM

Co-hosted by: Southwest Climate Adaptation Science Center, South Central Climate Adaptation Science Center, USDA Southwest Climate Hub, and Southwest Decision Resources

October, 2022 - Indian Pueblo Cultural Center - Albuquerque, New Mexico

Today's charge: finding solutions!

As a growing community of practice, can we collectively:

1. *Identify ways to turn barriers into opportunities*
2. *Think about new and existing ways to **connect with people** and **build community***
3. *Can we start to build the relationships to support **collective** action???*



Insights from the IPCC AR6 WG2: North American & SW



ipcc

REPORTS SYNTHESIS REPORT WORKING GROUPS ACTIVITY

CALENDAR

Climate Change 2022: Impacts, Adaptation and Vulnerability

The Working Group II contribution to the Sixth Assessment Report assesses the impacts of climate change, looking at ecosystems, biodiversity, and human communities at global and regional levels. It also reviews vulnerabilities and the capacities and limits of the natural world and human societies to adapt to climate change.

Screen

Awareness of the need for adaptation is increasing, but action has been gradual, incremental, and reactive.

Current practices will be increasingly insufficient without coordination and integration of efforts through equitable policy and finance focused on modifying land use impacts, consumption patterns, economic activities, and nature-based solutions.

Insight from the IPCC: Transformative Adaptation?!?

- **Transformational, long-term adaptation action**, that reduces risk and increases resilience, can address rapidly escalating impacts in the mid to latter part of the 21st century...
- Near- and long-term adaptation planning, implementation, and coordination across sectors and jurisdictions supports **equitable and effective climate solutions that can lead to a climate resilient future**

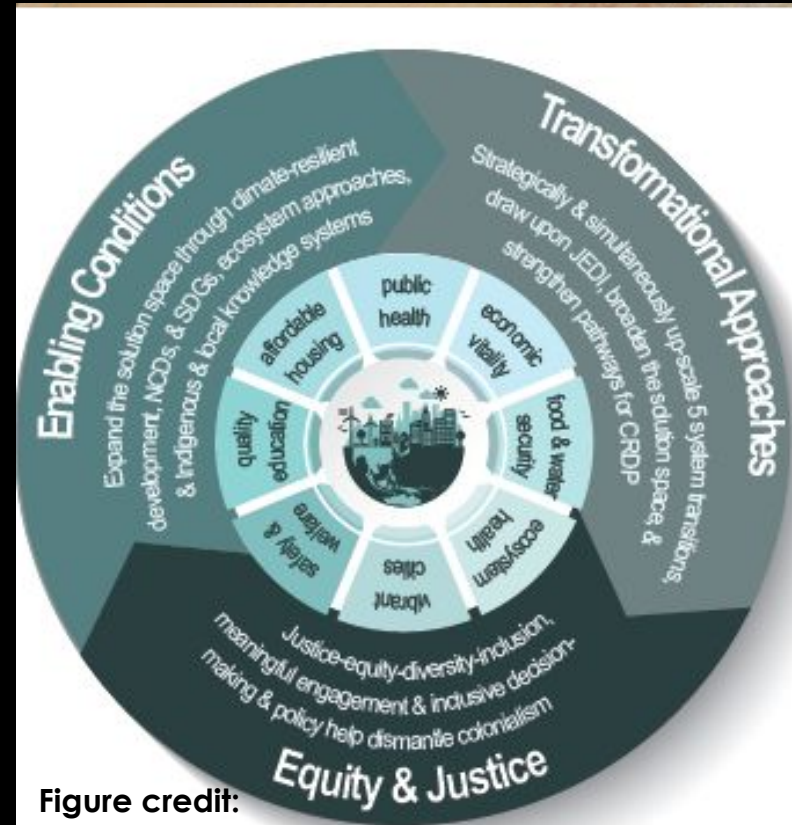


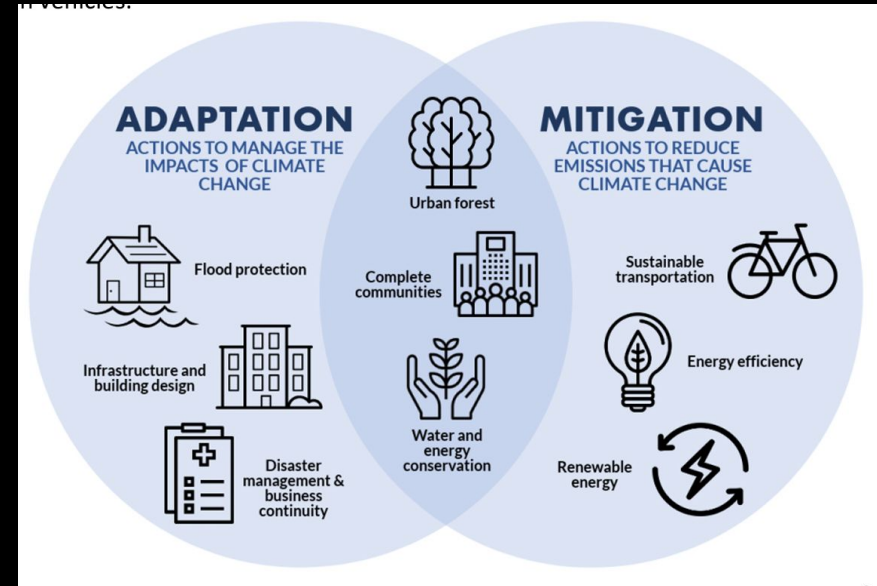
Figure credit:

Indigenous Knowledges are recognized by the IPCC (finally)

- Throughout North America, the Southwest and California, Indigenous Peoples are **actively addressing the compound impacts of climate change, and historical and ongoing forms of colonialism.**
- Indigenous knowledge **underpins successful** understanding of, responses to, and governance of climate change risks.
- Western scientific practices and technology **may not be sufficient in addressing future natural resource management challenges.**
- Supporting Indigenous **self-determination, recognizing Indigenous Peoples' rights, and supporting Indigenous knowledge--and other forms of local knowledge--will be critical** to reducing climate change risks to achieve *adaptation success now and into the future*

IPCC Insights: Limits to and opportunities for Adaptation

- ❑ Adaptation **cannot prevent all losses and damages**, even with effective adaptation & before reaching limits.
- ❑ **Accelerating adaptation actions** may help avoid the worst impacts...
- ❑ **Opportunities include:**
 - ❑ Working at the **interface** of mitigation-adaptation
 - ❑ **Disaster-proofing** energy plants and critical **infrastructure** to ensure market resilience & the use of **diverse energy sources**
 - ❑ Strengthening **health care systems**



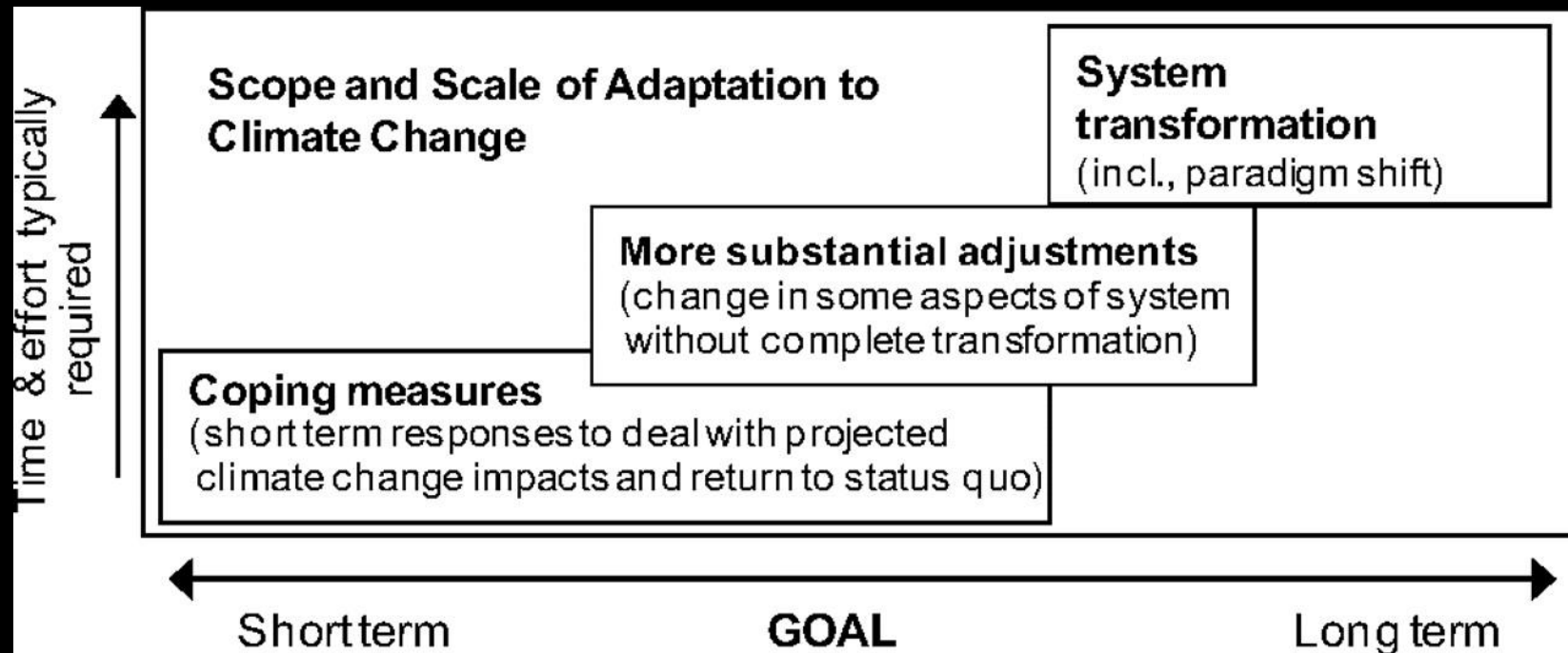
Investing in **Nature-based solutions (NbS)** to protect and improve our natural, physical, and social infrastructure...

“actions to protect, sustainably manage and restore natural or modified ecosystems that address societal challenges effectively and adaptively, simultaneously providing human well-being and biodiversity benefits”.



Transformative Adaptation: Our **collective** challenge

Scaling and accelerating solutions to create climate resilient communities



Today's charge: finding solutions!

As a growing community of practice, can we collectively:

1. *Identify ways to turn barriers into opportunities*
2. *Think about new and existing ways to **connect with people** and **build community***
3. *Can we start to build the relationships to support **collective** action???*

