



SOUTHERN CALIFORNIA MONTANE FORESTS PROJECT

*A Climate-Informed
Conservation Strategy*

Southern California's montane forests are "sky islands" of mountain habitat that feature conifers and several oak species. These forests are facing rapidly intensifying stressors and disturbances that are exacerbated by climate change.

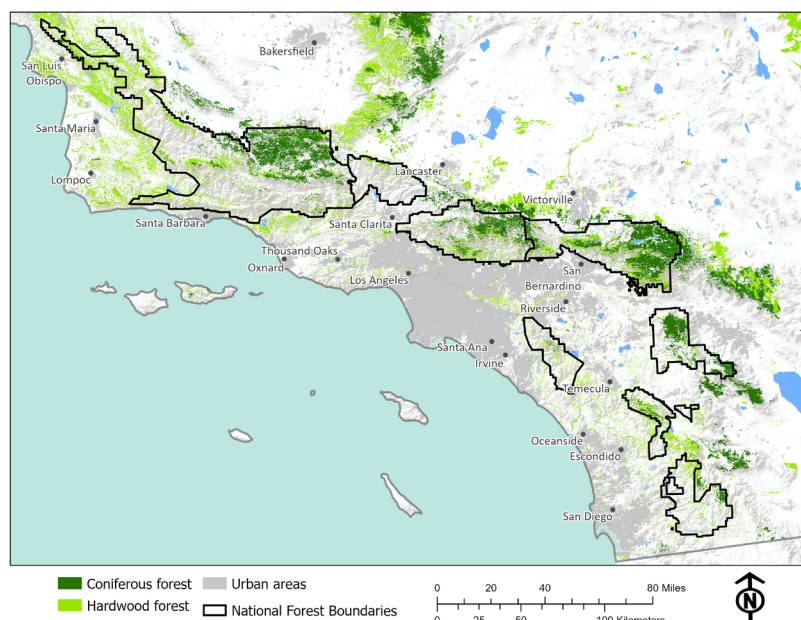
The goal of this project is to engage partners across the region in advancing our collective understanding of the vulnerabilities and challenges facing these forests and identify the opportunities and strategies for increasing forest resilience.



This multi-jurisdictional project is a collaborative partnership among the Climate Science Alliance, U.S. Forest Service, Institute for Ecological Monitoring and Management at San Diego State University, and the Southwest Climate Adaptation Science Center.

Through collaborative planning sessions, guided by stakeholder input, we will develop a scientific assessment and create a conservation strategy for southern California's montane forests.

Figure: Map depicting extent of hardwood (light green) and coniferous forest (dark green) in southern California in relation to National Forest boundaries.



PROJECT OBJECTIVES

Build a Community of Practice

We will promote partner engagement and collaboration, striving to develop a common understanding among resource and fire managers, policy makers, the science community, Tribal partners, and other stakeholders regarding the threats to southern California's montane forests and the ecosystem services they provide as well as strategies to minimize those threats.

Build a Climate-Informed Strategy

Our project team will work with this community of practice to:

DEVELOP A FOREST CONSERVATION STRATEGY

This climate-informed strategy will serve as a road map for sustainability of montane forests in southern California;

IDENTIFY IMPLEMENTATION ACTIONS

The strategy will inform planning and management efforts to enhance forest health and resilience;

PROMOTE COLLABORATION

To accomplish the implementation actions identified in the strategy, we will promote ongoing collaborative action and foster the development of partnerships to improve forest resilience.

Overall, this project looks to overcome the challenges of managing sustainable montane forests in southern California by creating a coordinated strategic conservation vision and action plan shared across agencies and stakeholders.

Join the conversation at:
www.climatesciencealliance.org/southern-forests

